



The Propex Heatsource range of propane fuelled compact air heaters are designed to provide an efficient and economical source of heat, independent of the engine, for both vehicle and marine applications. Designed for ease of installation, they provide quiet, maintenance free operation and are easy to control using our electronic thermostat which, features both temperature control as well as a facility to run the fan on its own. Two models are available, the HS2000 with a heat output of 6,500 Btu's and the HS2800, 10,000 Btu version. Both are available in 12v or 24v versions and are supplied with complete fitting kits for either vehicle or marine.

Heatsource HS2000 Air Heater	
Heat Output	6,484 Btu
Voltage	Specify 12V or 24V
Current Consumption	1.4A
Air Throughput	60 C.F.M
Fuel	Propane Gas
Average Gas Consumption	14 hours/gallon (continuous running)
Length	12.6 inches
Width	6.8 inches
Height	4 inches

Heatsource HS2800 Air Heater	
Heat Output	9,556 Btu
Voltage	Specify 12V or 24V
Current Consumption	1.9A
Air Throughput	85 C.F.M
Fuel	Propane Gas
Average Gas Consumption	10 hours/gallon (continuous running)
Length	16.4 inches
Width	8.3 inches
Height	4.8 inches



Sure Marine Service, Inc.
 5320 28th Ave N.W.
 Seattle, WA 98107
 (800)562-7797 (206)784-9903



PRO-2000-KIT

**Propex HeatSource Deluxe HS2000
6,500 BTU Marine Heating Kit**

\$1,073.57

Includes the Following Equipment:

Heater Equipment

HS2000 Propex HS2000 6,500 BTU LPG Heater with room thermostat, install manual and basic wiring harness

Quantity

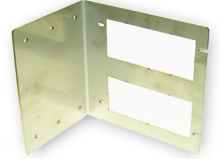
1 each



Mounting Equipment

PRO-700 Marine Mount Bracket

1 each



Electrical Equipment

75135K-15 Main Power Breaker

1 each



Exhaust and Intake Equipment

HTR-1 Hitech 1" Extension Hose
001-378 Combustion Air Fitting
W002-170NUT 22mm S/S 316 grade Thru Hull Exhaust FTG
W337-390 22mm S/S Flexible Exhaust Tube
W913-83B 22mm-24mm S/S Exhaust Clamp
W001-434 Insulation Sock
PERM-81878 High Temperature Silicon
CLA-016 1 1/2" S/S Hose Clamp

3 feet
1 each
1 each
3 feet
2 each
3 feet
1 tube
2 each



Ducting Equipment

398-497 60mm PAK Hot Air Duct
PRO-80-WYE Propex 80mm True Wye
PRO-80-60 Propex 80mm x 60mm Adapter
PRO-80-VENT Propex 80mm Non Closable Vent
PRO-80-VENT-2 Propex 80mm Closable Vent
CLA-036 S/S Hose Clamp

20 feet
1 each
6 each
2 each
1 each
8 each



May-12



Total \$1,073.57



Sure Marine Service, Inc.

5320 28th Ave N.W.

Seattle, WA 98107

(800)562-7797 (206)784-9903



PRO-2800-KIT

**Propex HeatSource Deluxe HS2800
10,000 BTU Marine Heating Kit**

\$1,263.78

Includes the Following Equipment:

Heater Equipment

HS2800 Propex 10,000 BTU LPG Heater with room thermostat, install manual and basic wiring harness

Quantity

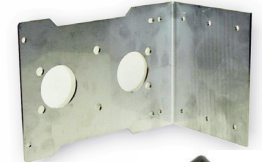
1 each



Mounting Equipment

PRO-701 Marine Mount Bracket

1 each



Electrical Equipment

75135K-15 Main Power Breaker

1 each



Exhaust and Intake Equipment

HTR-1 Hitech 1" Extension Hose
001-378 Combustion Air Fitting
W002-173NUT 1" S/S 316 grade Thru Hull Exhaust FTG
PRO-FLEX 1" S/S Flexible Exhaust Tube
94030 1" Galvanized Exhaust Clamp
W001-434 Insulation Sock
PERM-81878 High Temperature Silicon
CLA-016 1 1/2" S/S Hose Clamp

3 feet
1 each
1 each
3 feet
2 each
3 feet
1 tube
2 each



Ducting Equipment

001-058 3" PAK Hot Air Duct
PRO-80-WYE Propex 80mm True Wye
PRO-80-75 Propex 80mm x 3" Adapter
PRO-80-VENT Propex 80mm Non Closable Vent
WRD-75 75mm Aurora Grill
CLA-048 3" S/S Hose Clamp

20 feet
1 each
5 each
2 each
1 each
8 each



May-12



\$1,263.78

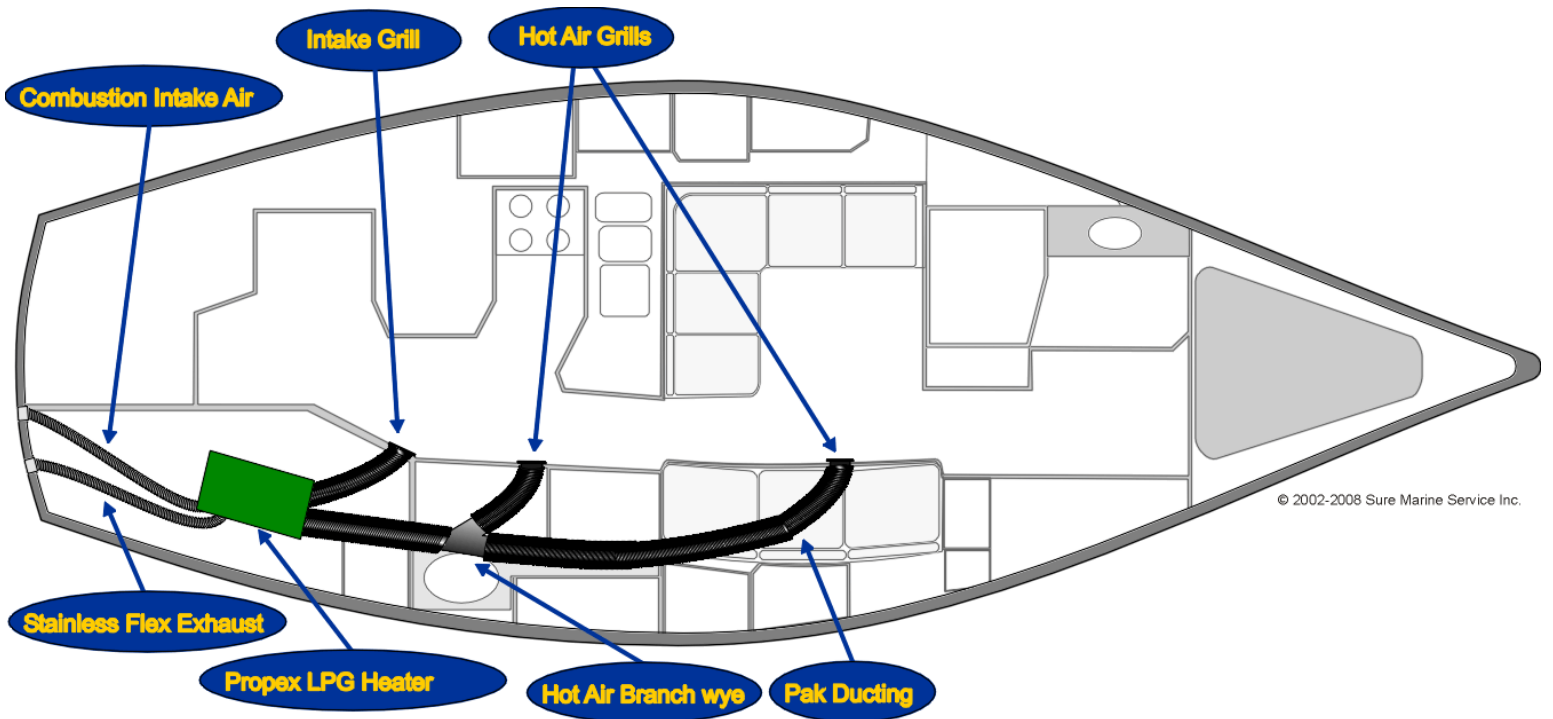


Sure Marine Service, Inc.

5320 28th Ave N.W.

Seattle, WA 98107

(800)562-7797 (206)784-9903



Sure Marine Service, Inc.

5320 28th Ave N.W.

Seattle, WA 98107

(800)562-7797 (206)784-9903